

About Lightic

Lightic GL is an inorganic expanded balloon composed primarily of glass.
 This glass is an environmentally-friendly product that makes use of recycled waste glasses, such as plate and bottle glasses.
 Glass balloons are used for compound material for heat insulation, weight saving, strengthening, and improved flowability.

Properties

(Chemical composition (%) : representative values)

lg.loss	SiO ₂	Al ₂ O ₃	Fe ₂ O ₃	CaO	MgO	K ₂ O	Na ₂ O	TiO ₂
1.66	65.73	3.34	1.02	11.34	3.44	1.03	12.23	0.15

(Grain distribution (%) : representative values)

	+2.0mm	2.0mm~ 1.5mm	1.5mm~ 1.0mm	1.0mm~ 0.5mm	0.5mm~ 0.3mm	-0.3mm
G L - 3	—	—	0.5	44.2	42.2	13.2
G L - 015	—	0.3	50.7	45.2	2.4	1.5
G L - 030	58.4	39.3	1.6	tr	tr	0.7

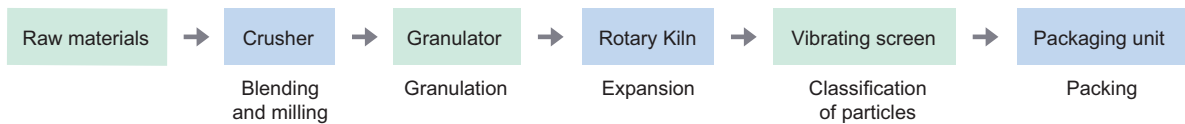
(Physical properties : representative values)

	Appearance coloration	Bulk specific gravity	Specific gravity	heat conductivity (kcal/mh°C)	Grain hardness (kgf)	water absorption (%)	pH
G L - 3	Grayish white to light brown	0.38	2.35	0.067	0.8	34.8	10.6
G L - 015	Grayish white to light brown	0.42	2.41	0.067	0.8	26.2	10.7
G L - 030	Grayish white to light brown	0.35	2.41	0.067	0.8	24.3	10.9

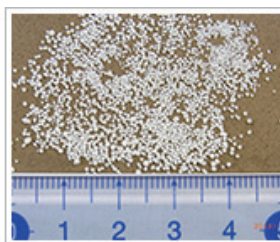
※ Alkali-silica aggregate reaction
 JIS A5308 Mortar Bar Method: harmless

Production of Glass balloon

【GL-3、GL-015、GL-030】



waste glass material



G L - 3



G L - 015



G L - 030

Applications

- Construction : Lightweight concrete, Lightweight mortar, Wall material, Acoustical board
- Resin : Lightweight recycled resin palette, Resin mortar
- Ceramic : Lightweight cement tile, Roof tile made of lightweight cement
- Other : Aggregate for lighting weight, Material with added function

Delivery formats

- Flexible containers : 350~450kg
- Paper bag : To be discussed